

April 2021 WTFC update

Release Notes

Pierre Cotterlaz

May 7, 2021

First release: May, 3rd

Minor revisions: May, 7th (removed some duplicated lines)

1 What's new?

1.1 Update of the source files

The April 2021 version of WTFC is based on data from the February 2021 version of BACI and the April 2021 version of TUV. Flows for the year 2019 are now included in the dataset.

1.2 Modification of some geographic entities

In the previous version, Belgium and Luxembourg did not appear as such in the data, but were gathered as a single entity: "Belgium and Luxembourg". This is not the case anymore, Belgium and Luxembourg appear as two separate entities as soon as the distinction is made in the source data (Comtrade), i.e. after 1998.

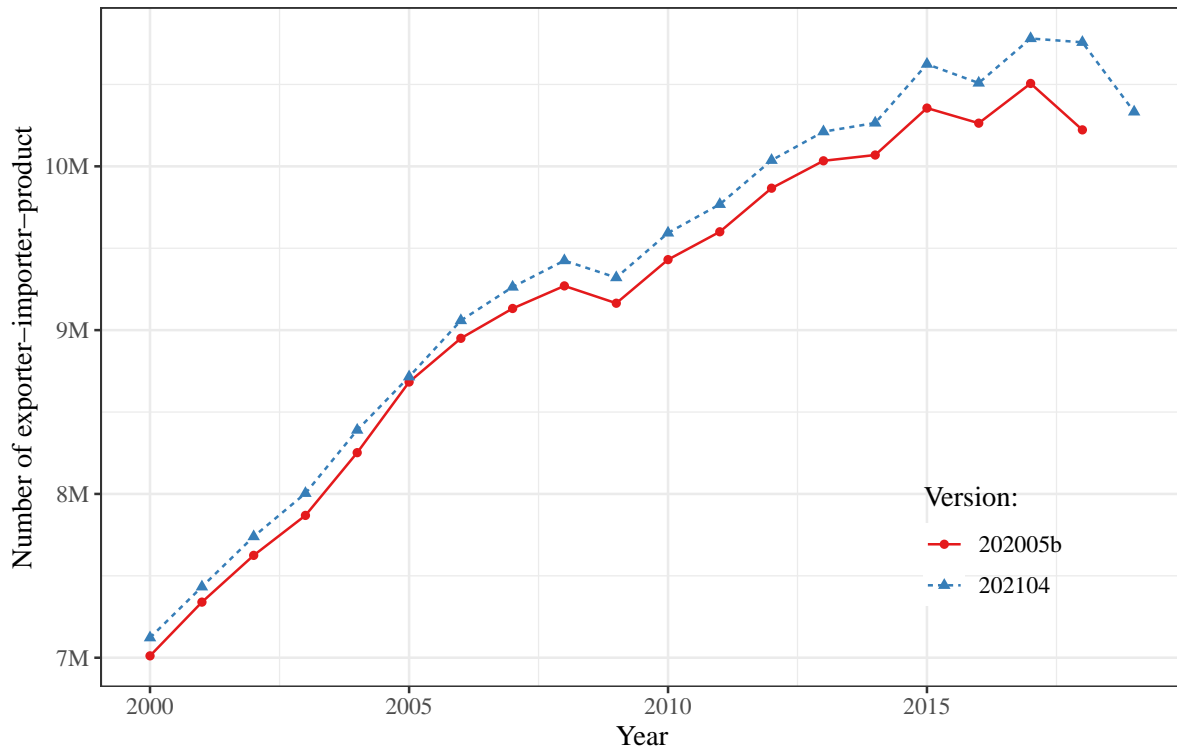
Similarly, countries that used to belong to the South African Customs Union (SACU) did not appear separately. Only the SACU was present in the data. BACI now reports trade for these five countries separately as soon as the distinction is made in the source data (Comtrade), i.e. after 1999.

We also attempted to fix the issue of duplicates in the source data for Serbia and Montenegro in 2005, and Sudan in 2011. This however could be further improved in the next version

2 Comparison of descriptive statistics

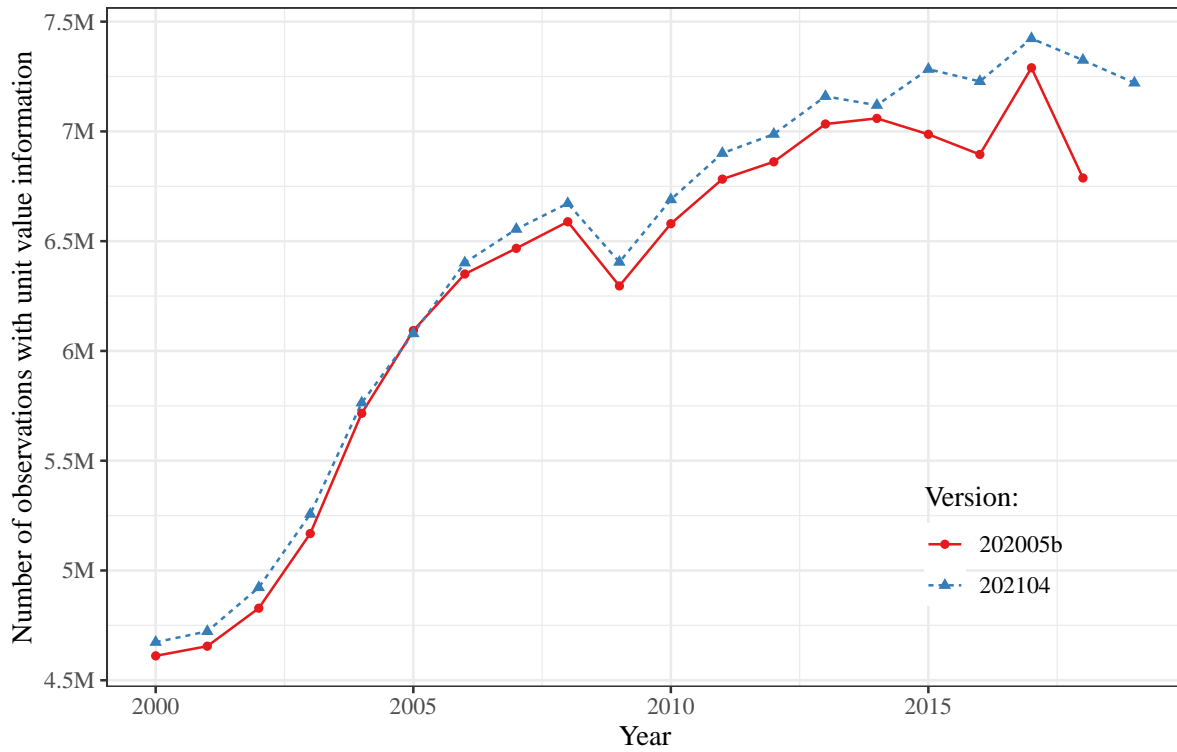
We present below some descriptive statistics to assess the changes between the current and the previous version of *WTFC*.

Figure 1: Number of observations (exporter-importer-product)



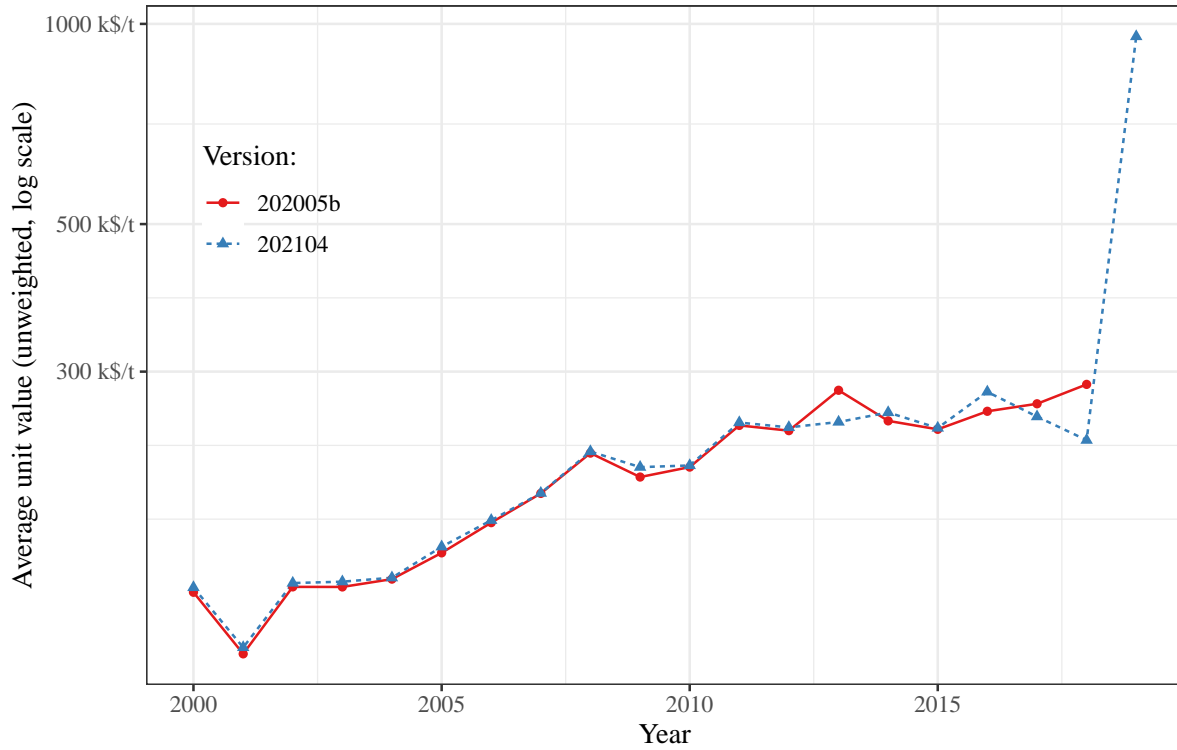
Notes: Version 202104 corresponds to the 2021 update. Version 202005b was the version available online until the 2021 update.

Figure 2: Number of observations with unit value information (exporter-importer-product)



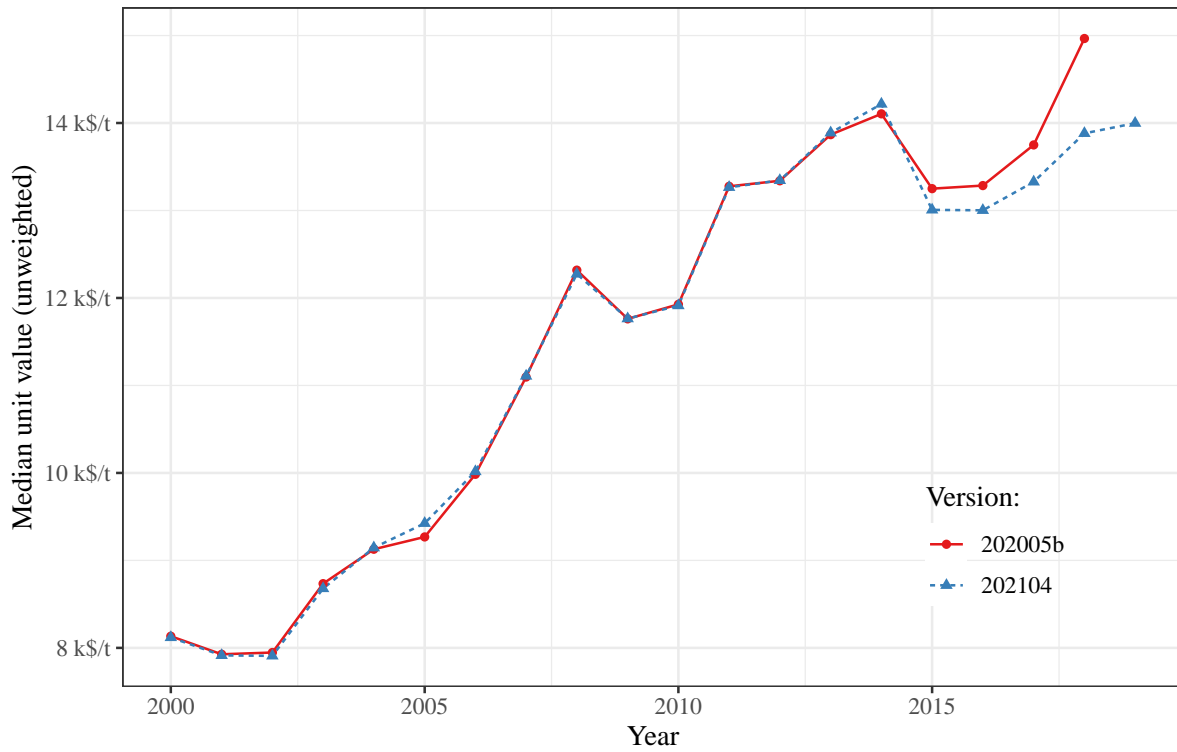
Notes: Some observations in WTFC do not have a unit value, but are nevertheless included because other variables are non missing. Version 202104 corresponds to the 2021 update. Version 202005b was the version available online until the 2021 update.

Figure 3: Average unit value (unweighted)



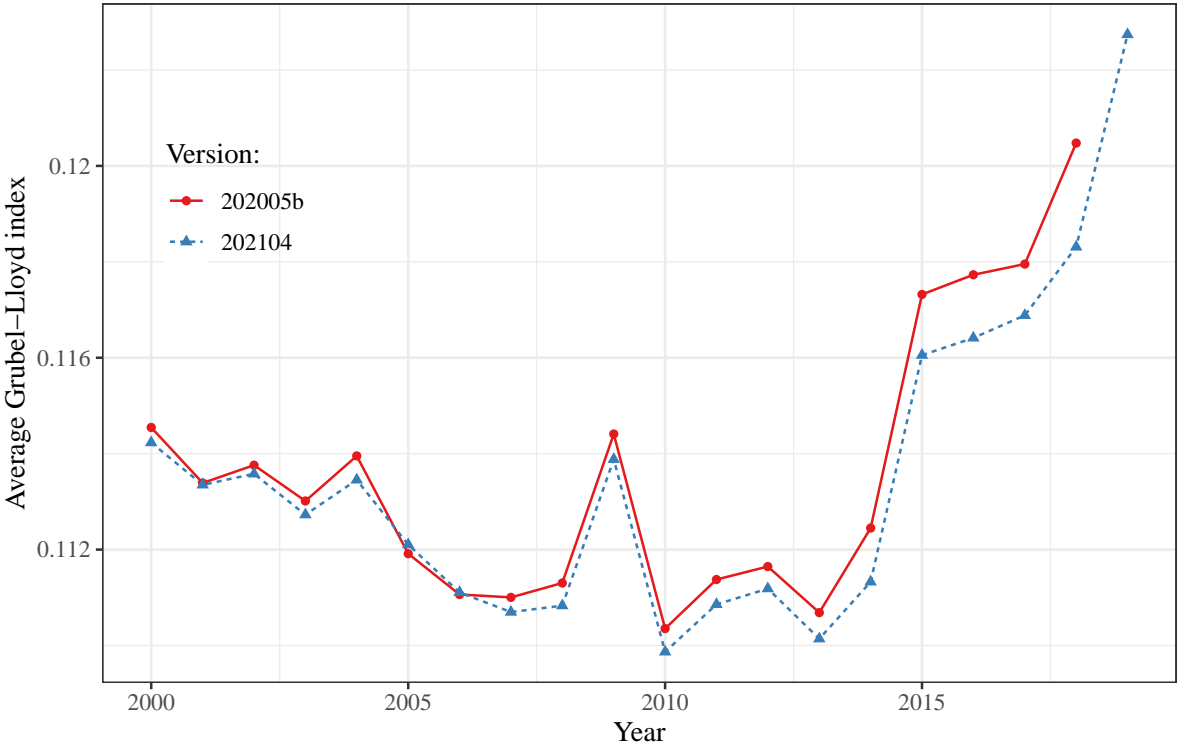
Notes: Version 202104 corresponds to the 2021 update. Version 202005b was the version available online until the 2021 update. The spike observed in 2019 is due to the inclusion of new products in TUV, that were absent in previous years.

Figure 4: Median unit value (unweighted)



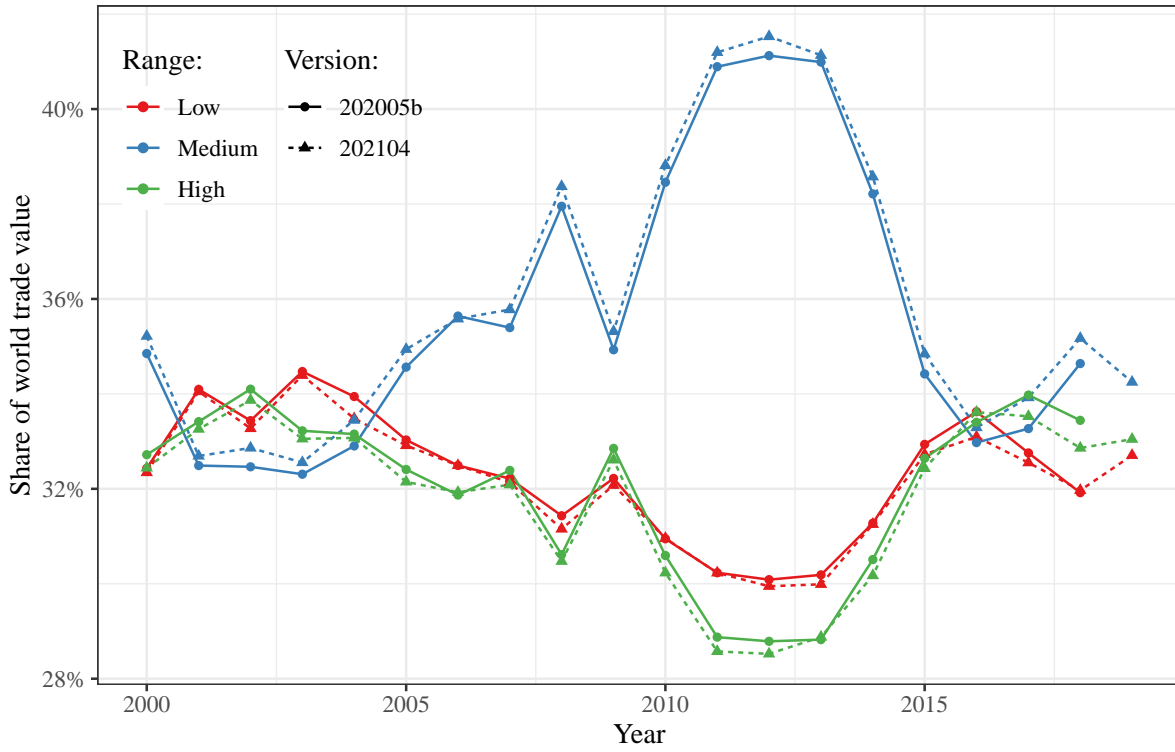
Notes: Version 202104 corresponds to the 2021 update. Version 202005b was the version available online until the 2021 update.

Figure 5: Average Grubel-Lloyd index (unweighted)



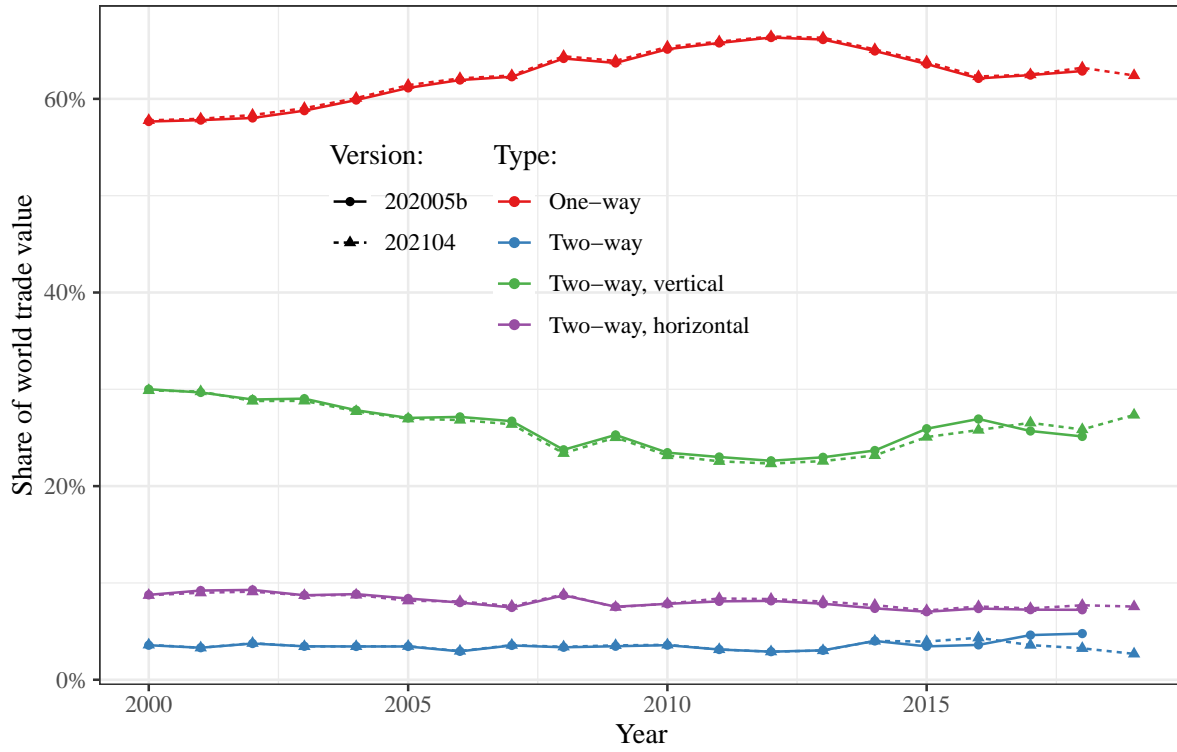
Notes: Version 202104 corresponds to the 2021 update. Version 202005b was the version available online until the 2021 update.

Figure 6: Share of world trade value by range of unit value



Notes: Version 202104 corresponds to the 2021 update. Version 202005b was the version available online until the 2021 update.

Figure 7: Share of world trade value by type of trade



Notes: Version 202104 corresponds to the 2021 update. Version 202005b was the version available online until the 2021 update.